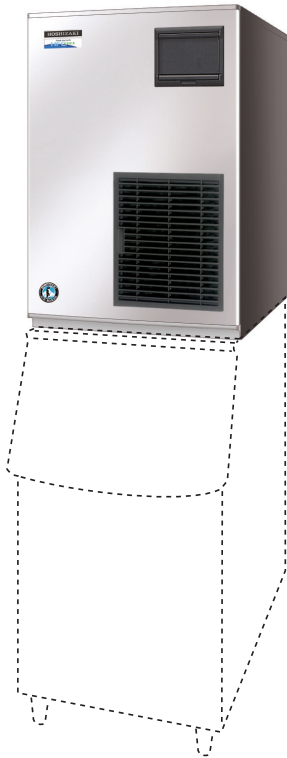


12,2%



NATURAL
REFRIGERANT
R290

Key Features

The FM-300AKE-HC-SB and FM-300AKE-HCN-SB are modular ice makers, which utilise Natural Refrigerant R290.

- Energy efficient, with savings of 12.2% compared to HFC equivalent model.*
- ✓ Produces either Flake or Nugget (-N) ice.
- ✓ Members of the Emerald Class, Hoshizaki's new range of climate friendly ice makers.
- ✓ Can produce up to 300kg of ice (flake) and 250kg (nugget) per 24 hours (AT.10°C.WT.10°C).
- ✓ Flake ice applications: food processing, fish and fresh produce display, organ transportation in medical arena.
- ✓ Nugget ice applications: packaged produce display (bottled beverages and food) and as key ingredient in beverages.
- ✓ Efficient ice making process due to Hoshizaki's unique FM auger system. Utilises all water brought into the machine; therefore water consumption is equal to ice production.
- ✓ Auger is made of double hardened stainless steel. Combined with carbon bearings, they work optimally in a tough and wet environment. Benefits include: longer product life expectancy and reduced maintenance costs.
- ✓ Electronically controlled to ensure an optimised ice making process under varying circumstances without the need for physical adjustments. Quality of ice is always consistent.
- ✓ Main characteristic of Hoshizaki's Flake ice is that 'freeze- burn' is prevented when displaying fresh fish or produce.



FM-300AKE-HC-SB
Ice: Flake



FM-300AKE-HCN-SB
Ice: Nugget

Available Models

Model	Air Cooled	Water Cooled
FM-300AKE-HC-SB	✓	
FM-300AKE-HCN-SB	✓	

Bins

Model	Type of Bin	Max. Bin Capacity approx.
B-301SA	Modular	144kg
B-501SA, Top Kit - TK 8 D		217kg
B-801SA, Top Kit - TK 8 D + TK 18 D		348kg

Production

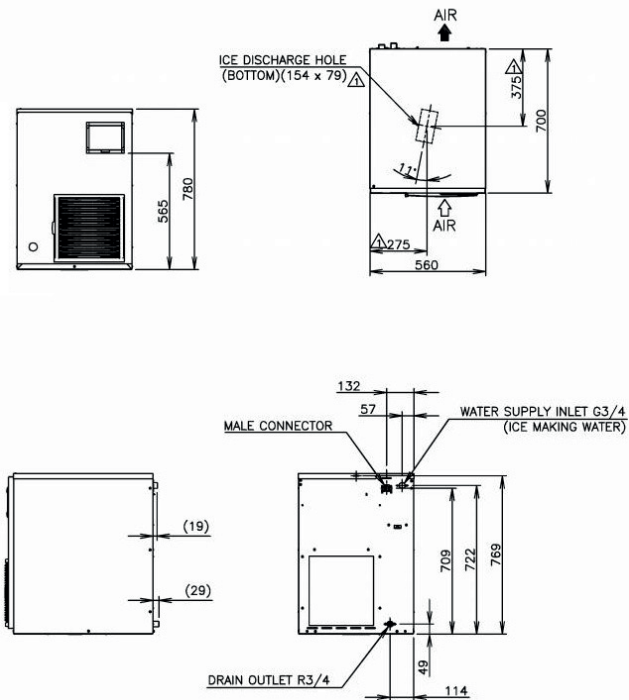
Model	Ice Production per 24h approx.	Temperature	Water Consumption per 24h approx.
FM-300AKE-HC-SB	300kg	AT.10°C, WT.10°C	0,300m ³
	250kg	AT.21°C, WT.15°C	0,250m ³
	205kg	AT.32°C, WT.21°C	0,205m ³
FM-300AKE-HCN-SB	250kg	AT.10°C, WT.10°C	0,250m ³
	210kg	AT.21°C, WT.15°C	0,210m ³
	175kg	AT.32°C, WT.21°C	0,175m ³

For more information visit our website at www.hoshizaki-europe.com

Hoshizaki Europe B.V. retains the right to change products and their specifications without prior notice.

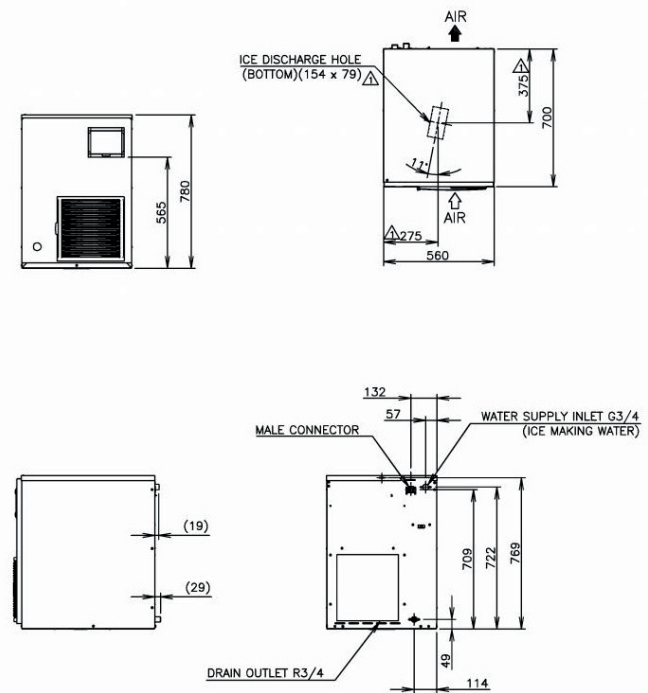


FM-300AKE-HC-SB



FM-300AKE-HCN-SB

➔ CAD drawings available on our website



Specifications

	FM-300AKE-HC-SB	FM-300AKE-HCN-SB
Dimensions W x D x H (mm)	560mm x 700mm x 780mm	560mm x 700mm x 780mm
AC Supply Voltage	1/220-240V 50Hz	1/220-240V 50Hz
Electric Consumption (AT.32°C, WT.21°C)	900W	960W
Heat Rejection (AT.32°C, WT.21°C)	1840W	1840W
Refrigerant Charge	R290	R290
Isolation	Polyurethane	Polyurethane
Weight Gross / Net	88 kg / 81 kg	88 kg / 81 kg

Operation Requirements

Ambient Temperature	5 - 40°C
Water Supply Temperature	5 - 35°C
Water Supply Pressure	0,05-0,8MPa (0,5-8bar)
Voltage Range	Rated Voltage ± 6%

Accessories

Installation Kit
Mounting Bracket

For more information please contact your local sales office:

Hoshizaki Belgium:
Hoshizaki Deutschland:
Hoshizaki France:
Hoshizaki Iberia:
Hoshizaki Middle East:

info@hoshizaki.be
info@hoshizaki.de
info@hoshizaki.fr
info@hoshizaki.es
sales@hoshizaki.ae

Hoshizaki Nederland:
Hoshizaki United Kingdom:
Other countries:

sales@hoshizaki.nl
uksales@hoshizaki.co.uk
sales@hoshizaki.nl

www.hoshizaki-europe.com